

cintropur®

WATERFILTRATION & TREATMENT



STAINLESS
STEEL

SILVER

SEMI-INDUSTRIAL & INDUSTRIAL FILTERS

NW 280

Ø 1"



NW 280 CTN

Ø 1"



NW 340

Ø 1 ¼"



NW 400

Ø 1 ½"



GENERAL DESCRIPTION

Made entirely from first quality synthetic material, CINTROPUR® filters are perfectly suitable for food products and drinking water.

The CINTROPUR® vane transforms the liquid flow into a centrifugal spin by throwing the larger particles down into the lower bowl, according to the chosen filter sleeve micron-size.

BASIC PRINCIPLE

Protection of industrial as well as residential and agricultural installations by filtering the solid particles (earth, sand, rust, etc,...) suspended in the water.

APPLICATIONS

- **INDUSTRY:** Protection of sanitary fittings and machine tools.
- **AGRICULTURE:** Filtration of watering (spraying) installations;
Filtration of water for animals; Filtration of rainwater and well water.
- **GROUPS:** (hotels, restaurants, schools, buildings, ...) protection of the sanitary installations and all electrical/domestic appliances.

ADVANTAGES

- high and constant flow rate
- low pressure drop
- centrifugal prefiltration with a cyclonic effect
- robustness and reliability
- fast and easy flushing out
- permanent visual control of the filter sleeve (transparent bowl)
- exclusive system, ecological and not expensive (filter sleeve)
- can be combined with UV and activated carbon

WATER TREATMENT

The water treatment (TE & CTN) models are equipped with a special device that allows the use of different water treatment products.

• POLYPHOSPHATES, SILICATES AND SILICON-POLYPHOSPHATES

Efficient up to 60°C / 140° F, these products are used to reduce the harmful and scaling effects of the water hardness. The protection of new installations against rust is also a well known application.

• ACTIVATED CARBON

The activated carbon CINTROPUR® is sold separately and is highly suitable for the improvement of taste and the removal of odour, chlorine, ozone, micropollutants such as pesticides and other dissolved organic substances.



NW 500

Ø 2"

NW 650

Ø 2 1/2"

NW 800

Ø 3"

NW 500 TE

Ø 2"



REFILL



FILTER SLEEVE



ACTIVATED CARBON



Stainless Steel

50µm 90µm

Unit packaging

Silver

50µm 90µm

Unit packaging

Washable

150µm 300µm

sets of 5 pieces

Non washable

1µm 5µm 10µm
25µm 50µm 100µm

sets of 5 pieces



Quality CINTROPUR® SCIN.
Carton of 3.4 liters / 0.90 US Gal.
For the bowl NW 500TE 4.85 liters / 1.28 US Gal.
NW 280 CTN 0,75 liters / 0.462 US Gal.



ACCESSORIES



• PRESSURE GAUGES 0-20 BAR 1/4"

Model with glycerin. Indicate the system pressure.

Filter sleeves are to be changed at ΔP of 2 bar or at least 3 times a year.



• 2' DUO CONNECTOR

For assembling 2 SI heads (NW280-340-400)



• WALL FIXATION

Stainless steel wall bracket is to be fixed to the filter head with two locking nuts.

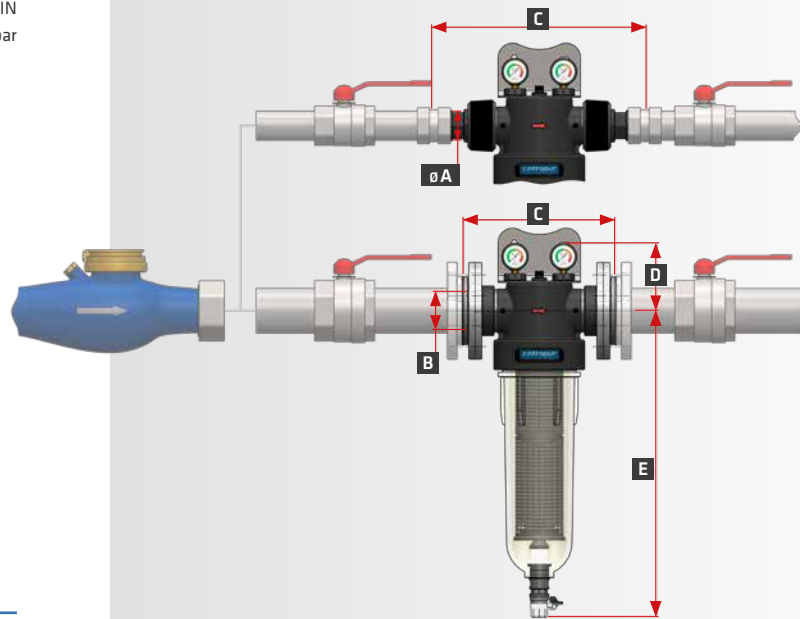


TECHNICAL DATA



	NW 280	NW 280 CTN	NW 340	NW 400	NW 500	NW 650	NW 800	NW 500 TE
Diameter of pipe	1"	1"	1 1/4"	1 1/2"	2"	2 1/2"	3"	2"
Average flow rate (m³/h) ΔP = 0.2 bar	7	3,5*	10	12	18	25	32	5*
Working pressure (bar)	10	10	10	10	10	10	10	10
Max. operating pressure (bar)	16	16	16	16	16	16	16	16
Max. operating temperature (°C)	50	50	50	50	50	50	50	50
Weight (Kg)	2,2	2	2,7	2,9	6,4	7	7,4	5,6
Standard filter sleeve (μm)	25	-	25	25	25	25	25	-
Available volume (litre)	-	0,75	-	-	-	-	-	4,85
Filtration surface (cm²)	530	-	770	1010	1288	1288	1288	-

* Value with activated carbon CINTROPUR® SCIN
ΔP = 0,8 bar



INSTRUCTIONS

	NW 280	NW 280 CTN	NW 340	NW 400	NW 500	NW 650	NW 800	NW 500 TE
A (∅)	1"	1"	1 1/4"	1 1/2"	2"	2 1/2"	3"	2"
B	DN25	DN25	DN32	DN40	DN50	DN65	DN80	DN50
C (mm)	284	284	284	284	443	304	313	443
D (mm)	99	56	99	99	±140	±140	±140	±86
E (mm)	373	373	474	576	632	632	632	632

cintropur®

WATER FILTRATION & TREATMENT



**DOMESTIC
FILTERS**

SL 160
ø 3/4"

SL 240
ø 3/4" or 1"

**SL 240
DUO-CTN**
ø 3/4" or 1"

**SL 240
TRIO-CTN**
ø 3/4" or 1"



**SMART
LINE** The most
compact filter

Ideally for
rainwater

■ GENERAL DESCRIPTION

Made entirely from premium quality synthetic material, CINTROPUR® filters are ideal for use with food products and drinking water.

The CINTROPUR® vane changes the liquid flow using centrifugal motion, forcing the larger particles down into the lower bowl, depending on the chosen filter sleeve micron-size.



■ BASIC PRINCIPLE

The protection of sanitary domestic, collective and agricultural water supplies by filtering out the solid particles (earth, sand, rust, etc.) suspended in the water. Ideally the protection filter will be placed at the entrance of the installation, in order to protect all the devices connected below.

■ APPLICATIONS

- **RESIDENTIAL:** Protection of sanitary networks supplied with domestic water, rainwater or well water. Filtration of water before softener, reverse osmosis or treatment by ultraviolet.
- **INDUSTRIAL:** Protection of sanitary networks, machine tools and all industrial machinery for water treatment. Filtration of water before high pressure cleaning machines (100 to 200bar / 1 500 to 3 000 psi) and very high pressure cleaning machines (1 500 to 2 500 bar / 21 000 to 35 000 psi).
- **AGRICULTURAL:** Filtration of watering (spraying) installations, filtration of water for animals, filtration of rainwater and well water.

■ ADVANTAGES

- High and constant flow rate
- Low pressure drop
- Centrifugal prefiltration with a cyclonal effect
- Robustness and reliability
- Fast and easy flushing out (on NW range)
- Exclusive system, ecological and not expensive (filter sleeve)
- Permanent visual control of the filter sleeve (transparent bowl).



NW 18

ø 3/4"



NW 25

ø 3/4" or 1"



NW 25 TE-CTN

ø 1"



NW 25 DUO-CTN

ø 3/4" and 1"

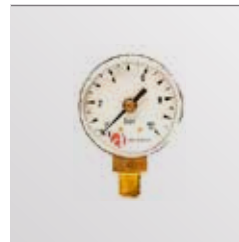


■ ACCESSORIES



· WALL BRACKET

Unique model for the entire range, with 2 possible positions. Delivered standard on SL range + NW 25 DUO-CTN.



· PRESSURE GAUGES 0-10 BAR 1/8"

(ON NW RANGE)

Before the assembly, drill fully and thread. Gives the pressure of the installation. Filter sleeve to be changed at 1 bar / 14.22 psi ΔP, or at least twice a year.



· REFILLABLE CONTAINER CTN

This unique model of container was made for a treatment with activated carbon. Compatible for models SL240 TE-CTN + SL240 DUO-CTN + SL240 TRIO-CTN + NW25 TE-CTN + NW25 DUO-CTN + TIO.



· RECEPTACLE FOR ACTIVATED CARBON

Adaptable for NW 25 TE and NW 32 TE, this tube and this strainer will be used for the treatment with activated carbon or with crystals.



· CONNECTION NIPPLE 3/4" OR 1"

(ON SL RANGE)

Perfect for a quick and secure assembly of two SL heads.



· DRAIN COCK 1/4" (ON NW RANGE)

Allows the draining under pressure of the larger particles collected by the centrifugal effect. The bowl is screwed into place **only** by hand (no tools required). Identical for NW 18 - NW 25 - NW 32.



Optimal filtration technique through a filter sleeve and a centrifugal vane.

NW 32

ø 1 1/4"



NW 32

TE

ø 1 1/4"



T10

ø 1"



■ ADVANTAGES OF USING THE CINTROPUR® TE-CTN + ACTIVATED CARBON CINTROPUR® SCIN

1. Its large pore volume and pore size distribution makes it highly suitable for the improvement of taste and the removal of odour, chlorine, ozone, micropollutants such as pesticides and other dissolved organic substances.
2. The quantity of activated carbon which is used in the CINTROPUR® TE-CTN filters guarantees optimal results, as well as optimal lifespan. The poorer the flow rate, the greater the result.
3. The lifetime of the carbon depends on its application: for drinking water it is recommended to change the carbon every 3 months (max. 20 000 filter volumes) otherwise every 6 months at the most.
4. The internal mechanism of the TE filters ensures a maximum contact time between the untreated water and the activated carbon; guaranteeing optimal efficiency of treatment.
5. One of the best activated carbons available on the market is used, offering a very high adsorption capacity.
6. The advantageous price of activated carbon refilling: packaging specially designed for easy filter filling.

■ REFILL

1 ACTIVATED CARBON (CARTON OF 3.4 L / 0.90 US GALL)

Quality CINTROPUR® SCIN

Capacity of the available volumes for:

Cartridge CTN = 0.57 l (6 refills)

NW 32 TE = 1.7 l (2 refills).

2 FILTER SLEEVE (SETS OF 5 PIECES)

Non washable: 1µm* / 5µm / 10µm / 25µm / 50µm / 100µm

Washable: 150µm* / 300µm*

*Excepted SL160 + NW18



1



2

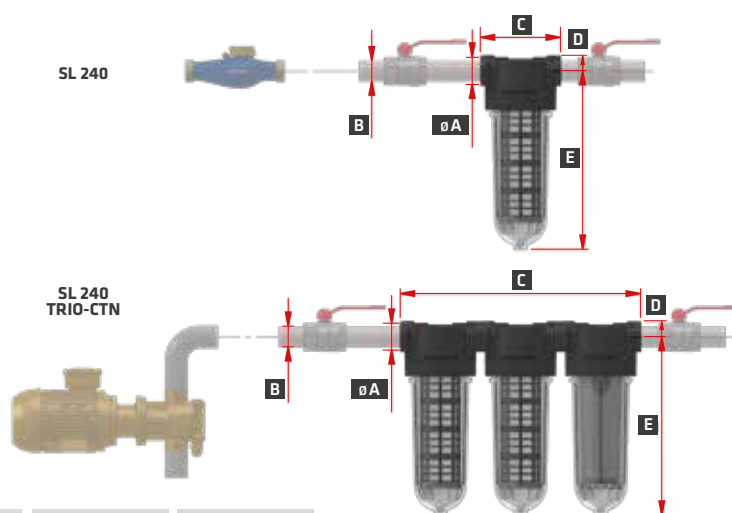


TECHNICAL DATA SL

	SL 160	SL 240	SL 240 TE-CTN	SL 240 DUO-CTN	SL 240 TRIO-CTN
Diameter of pipe	3/4"	3/4" or 1"	3/4" or 1"	3/4" or 1"	3/4" or 1"
Average flow rate (m³/h) ΔP = 0.2 bar	3	3,5 / 4,5	0,5*	0,5*	0,5*
Working pressure (bar)	8	8	8	8	8
Max. operating pressure (bar)	12	12	12	12	12
Max. operating temperature (°C)	50	50	50	50	50
Weight (Kg)	0,68	0,9	1,23	1,85	3,05
Standard filter sleeve (µm)	25	25	-	25	100 and 25
Available volume (litre)	-	-	0,57	0,57	0,57
Filtration surface (cm²)	190	450	-	450	2 x 450

* Value with activated carbon CINTROPUR® SCIN

INSTRUCTIONS



	SL 160	SL 240	SL 240 TE-CTN	SL 240 DUO-CTN	SL 240 TRIO-CTN
A (∅)	3/4"	3/4" or 1"	3/4" or 1"	3/4" or 1"	3/4" or 1"
B	DN20	DN20 / DN25	DN20 / DN25	DN20 / DN25	DN20 / DN25
C (mm)	130	130	130	260	390
D (mm)	25	25	25	25	25
E (mm)	152	290	290	290	290

**THE BEST CHOICE
FOR YOUR WATER**

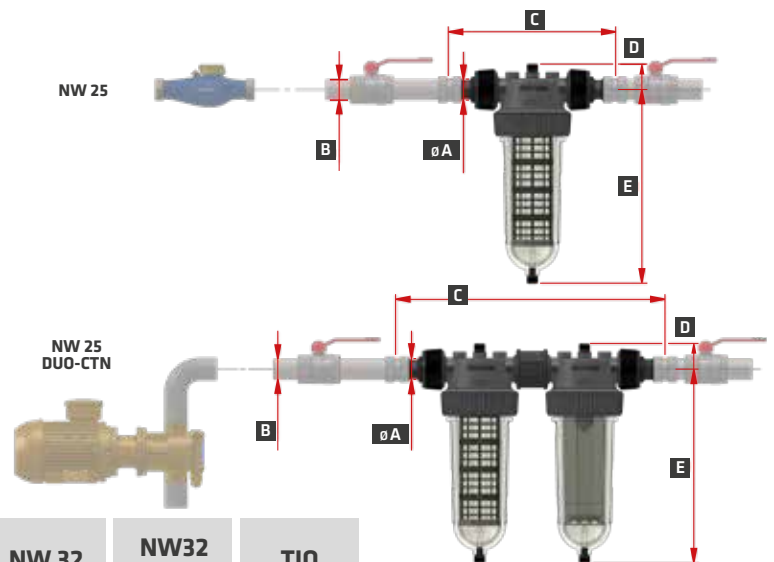


TECHNICAL DATA NW

	NW18	NW25	NW25 TE-CTN	NW 25 DUO-CTN	NW32	NW32 TE	TIO
Diameter of pipe	3/4"	3/4" or 1"	1"	3/4" and 1"	1 1/4"	1 1/4"	1"
Average flow rate (m³/h) ΔP = 0.2 bar	3,5	5,5	0,5*	0,5*	6,5	0,5*	0,5*
Working pressure (bar)	10	10	10	10	10	10	10
Max. operating pressure (bar)	16	16	16	16	16	16	16
Max. operating temperature (°C)	50	50	50	50	50	50	50
Weight (Kg)	1,1	1,2	1,3	3,2	2,1	2,1	2,6
Standard filter sleeve (µm)	25	25	-	25	25	-	25
Available volume (litre)	-	-	0,57	0,57	-	1,7	0,57
Filtration surface (cm²)	190	450	-	450	840	-	335

* Value with activated carbon CINTROPUR® SCIN

INSTRUCTIONS



	NW 18	NW 25	NW25 TE-CTN	NW 25 DUO-CTN	NW 32	NW32 TE	TIO
A (∅)	3/4"	3/4" or 1"	1"	3/4" and 1"	1 1/4"	1 1/4"	1"
B	DN20	DN20 / DN25	DN25	DN20 / DN25	DN32	DN32	DN25
C (mm)	269	269	269	439	269	269	269
D (mm)	43	43	43	43	43	43	43
E (mm)	192	314	314	314	500	500	500

cintropur®

WATERFILTRATION & TREATMENT



ULTRAVIOLET STERILIZATION

MONO-UV

2100

Ø ¾" - 1" / 25W

4100

Ø ¾" - 1" / 40W

6100

Ø 1" / 60W

10100

Ø 2" / 95W



4100



GENERAL DESCRIPTION

Thanks to its simplicity and efficiency, water sterilization by UV radiation has developed extensively in the recent years.

UV radiation at 253.7 nm is part of the solar radiation, and is reproduced artificially. UVC radiation thus produced is of much greater intensity than sunlight - therefore suitable for water sterilization.

This premium disinfection method is recognised for its environmentally friendly elimination of legionella, microbes, bacteria, viruses and protozoa.

This is the ideal method to remove micro-organisms from water, and thus make it potable in terms of bacteriology.

This water will only be considered potable if the chemical parameters are also checked and approved.

ADVANTAGES:

- Easy to install and use
- 100% physical disinfection using UV's
- Natural water treatment with no chemical products added and thus no risk of overdosing
- No unpleasant taste or smell in the water
- Proven efficiency against human pathogenic micro-organisms
- No toxic by-products generated
- Lower maintenance

AREAS OF USE UV2100 - UV 4100 (+TRIO)

1. General household supplies: baths and showers
2. Food preparation
3. American refrigerators
4. Chilled water coolers
5. Aquariums
6. Washing food
7. Livestock: chickens, rabbits, ducks, etc. for drinking water free from potentially pathogenic micro-organisms

APPLICATIONS- ORIGINS OF WATER

1. Rainwater: this treatment will extend the range of applications with greater safety of use.
2. Borehole and well water: to prevent pathogenic contamination.
3. Mains water: to make sure that water quality meets expectations when it does not meet quality criteria.
4. Spring and surface water: to ensure a constant bacteriological quality.
5. Water stored in tanks (caravans, boats, etc.): for sanitary use of water once it has been stored.

DUO-UV

2100

Ø ¾" - 1" / 25W



UV - ADVANTAGES:

- More compact than any other UV-device
- Each component of premium quality
- The treatment's effectiveness, supported by biosimetry tests
- Flow rate from 1 to 7 m³/h
- Equipment : basic or full option available
- Possibility of combining UV + mechanical filter and activated carbon

PREFILTRATION PRIOR TO ANY UV-STERILIZATION PROCESS:

To achieve optimal UV sterilization, the water should be prefiltered to remove any suspended particles.

2100

Ø ¾" - 1" / 25W

4100

Ø ¾" - 1" / 40W



4100



THE ONLY TRIOS WHICH ...

... FILTER

a cyclonic effect generated by the centrifugal vane, precipitating large particles into the bottom of the bowl, and followed by fine filtration using a sleeve that can be adapted to your needs, between 5 and 25 µm, to clear the water of all particles in suspension.

... PURIFY

The use of activated carbon to treat the water against unpleasant tastes and odours, as well as pesticides and herbicides. A container for the activated carbon has been developed so that it can be reused. The user can easily replace the activated carbon by unscrewing the removable top cover.

... STERILISE

UV-c sterilisation to ensure the bacteriological quality of the water. It is particularly suitable for the complete treatment of rainwater.



TRIO-UV

6100

Ø 1" / 60W



10100

Ø 2" / 95W



AREAS OF USE UV 6100 - UV10100

1. Cultural and sports facilities
2. Horeca (stands for Hotel/Restaurant/Café)
3. Industrial livestock farming
4. Apartment buildings
5. Community areas
6. Agriculture
7. The industry in general

POSITIONING THE UV DEVICE:

In any line of water treatment equipment, the UV steriliser will always come last.

EASY TO USE:

When changing the lamp, simply rotate the UV unit by 5° to remove and change the UV lamp.



NOTE



Your UV steriliser will only remain efficient over time if the lamp is changed as recommended below. Once the period of use has expired, the continued blue radiation from the lamp is no longer an indicator that your device is working properly.

	Frequency	Designation	Model
#1	1x / Year	Lamp Mercury	UV 2100 - UV 4100
#2	1x / 2 Years	Lamp Amalgam	UV 6100 - UV 10100
#3	1x / 5 Years	Quartz	for all UV sterilizers



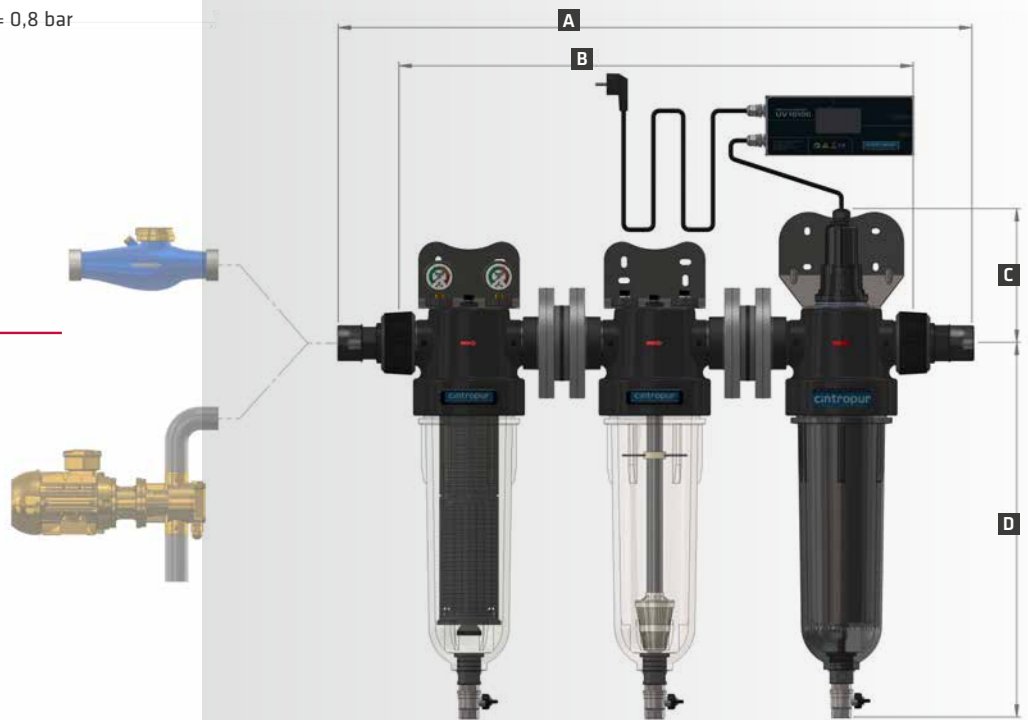
TABLE OF SPECIFICATIONS

UV 6100 / UV 10100 TRIO-UV 6100 / TRIO-UV 10100

	UV 6100	UV 10100	TRIO-UV 6100	TRIO-UV 10100
Connection diameter	1"	2"	1"	2"
Max. flow rate (m³/h) at 25 mJ/cm²	5,5	6,8	3,5*	5,5*
Max. working pressure (bar)	16	16	16	16
Max. temperature (°C)	50	50	50	50
Weight (kg)	6	9,3	10,7	29,3
Water transmission (% minimal)	90	90	90	90
Lamp power (W)	60	95	60	95

* ΔP = 0,8 bar

INSTALLATION DRAWING



	UV 6100	UV 10100	TRIO-UV 6100	TRIO-UV 10100
A (mm)	284	445	665	1068
B (mm)	169	252	553	876
C (mm)	162	196	162	196
D (mm)	527	601	527	601

TABLE OF SPECIFICATIONS

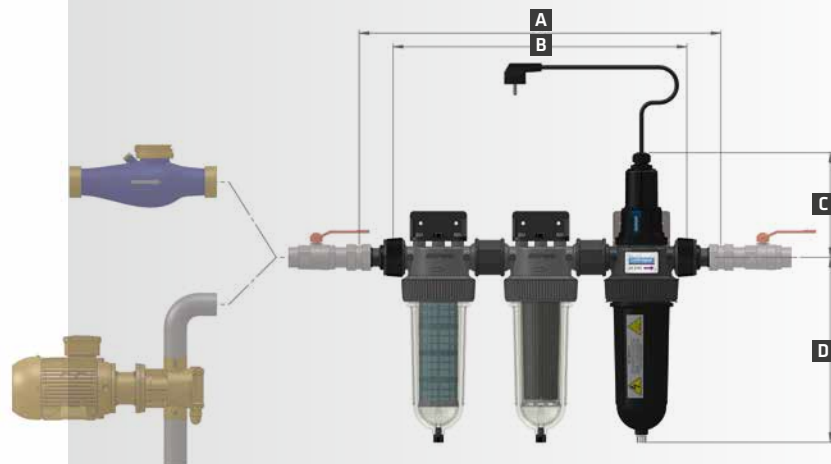
UV 2100 / UV 4100 / DUO-UV TRIO-UV 2100 / TRIO-UV 4100

	UV 2100	UV 4100	DUO-UV	TRIO-UV 2100	TRIO-UV 4100
Connection diameter	3/4" + 1"	3/4" + 1"	3/4" + 1"	3/4" + 1"	3/4" + 1"
Max. flow rate (m³/h) at 25 mJ/cm²	1,7	2,1	1,7	2*	2,6* ¹
Max. working pressure (bar)	16	16	16	16	16
Max. temperature (°C)	50	50	50	50	50
Weight (kg)	1,7	1,7	2,8	4,3	4,3
Water transmission (% minimal)	90	90	90	90	90
Lamp power (W)	25	40	25	25	40

* ΔP = 0,5 bar

*¹ ΔP = 0,8 bar

INSTALLATION DRAWING



	UV 2100	UV 4100	DUO-UV	TRIO-UV 2100	TRIO-UV 4100
A (mm)	270	270	435	610	610
B (mm)	154,5	154,5	320	487	487
C (mm)	178	178	178	178	178
D (mm)	314	314	314	314	314